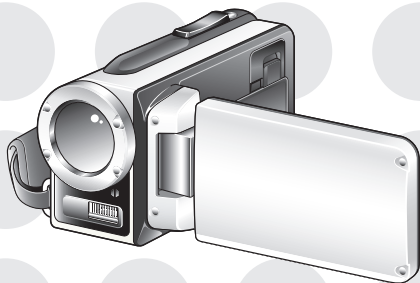


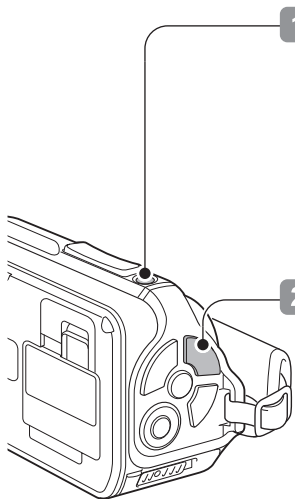
SANYO

Dual Camera
VPC-WH1EX
VPC-WH1
VPC-WH1GX

Xacti QUICK GUIDE



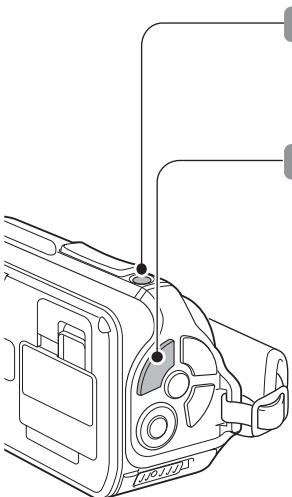
STEP 1 RECORD A VIDEO CLIP




- 1 Turn on the camera.
 - Press the ON/OFF button for at least 1 second.
 - If the screen to set the date and time appears, press the MENU button 2 times to cancel it.
- 2 Press the [] button to begin recording a video clip.
 - To stop recording, press the [] button again.

If the image is not captured...
Is there enough power left in the battery? Recharge the battery pack.
(See "Insert the battery pack" on the reverse side.)

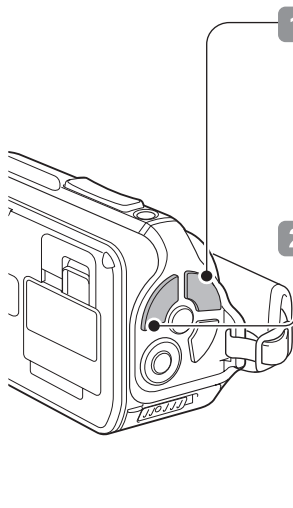
STEP 2 CAPTURE A STILL IMAGE



- 1 Turn on the camera.
- 2 Press the [] button.



You can capture a still image while recording a video clip.



- 1 Press the [] button to begin recording.
- 2 To capture a single shot while recording, press the [] button.
 - The scene at the time the [] button was pressed is captured as a still image.

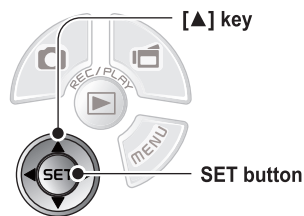
STEP 3 VIEWING IMAGES

- 1 **Press the REC/PLAY button.**
 - The last recorded image is displayed.
- 2 **Select the image to play back.**
 - Use the arrow keys to move the orange frame to the file you wish to play back.
- 3 **Press the SET button.**
 - The image you selected in step 2 is displayed fullscreen.
 - If a video clip was selected, playback begins.

To switch to the Recording Screen, press the REC/PLAY button.

Press the REC/PLAY button to switch between the Recording Screen and the Playback Screen.

STEP 4 DELETING IMAGES



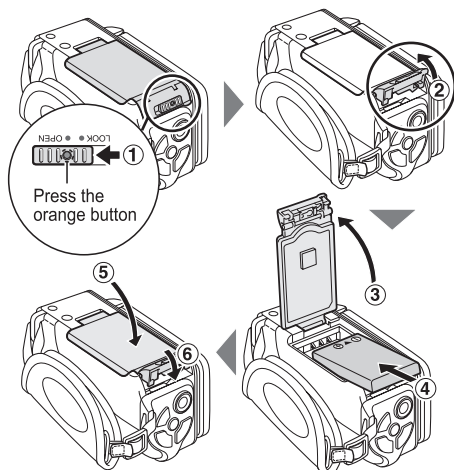
- 1 **Display the image that you want to delete.**
- 2 **Press [▲].**
 - The Confirm Delete Screen appears.
- 3 **Select “DELETE”, and press the SET button.**
 - The current image is deleted.
 - To return to the Playback Screen, select “EXIT”, and press the SET button.

Did your photos turn out the way you hoped? Even if you make a mistake, it's easy to delete the pictures you aren't satisfied with. Unlike film cameras, with a dual camera you can take all the photos you want, keep the ones you like and delete the rest.

INSTALL THE BATTERY PACK AND SD MEMORY CARD (sold separately)

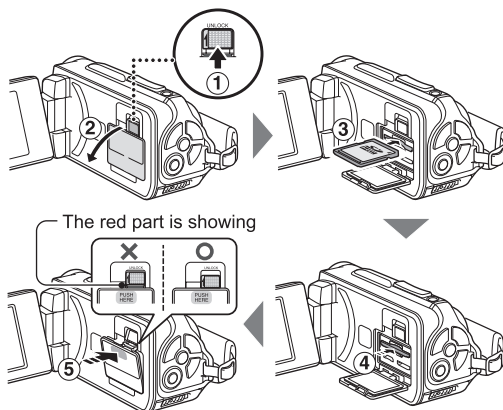
Insert the battery pack

After installing the battery pack, connect the AC adaptor (supplied) to the camera's DC IN terminal and charge the battery.



Insert the SD Memory Card

- In this manual, the SD Memory Card is referred to as the “card”.



<To remove the card...>

- If you push the card in, it will protrude slightly, and you can then pull it out.